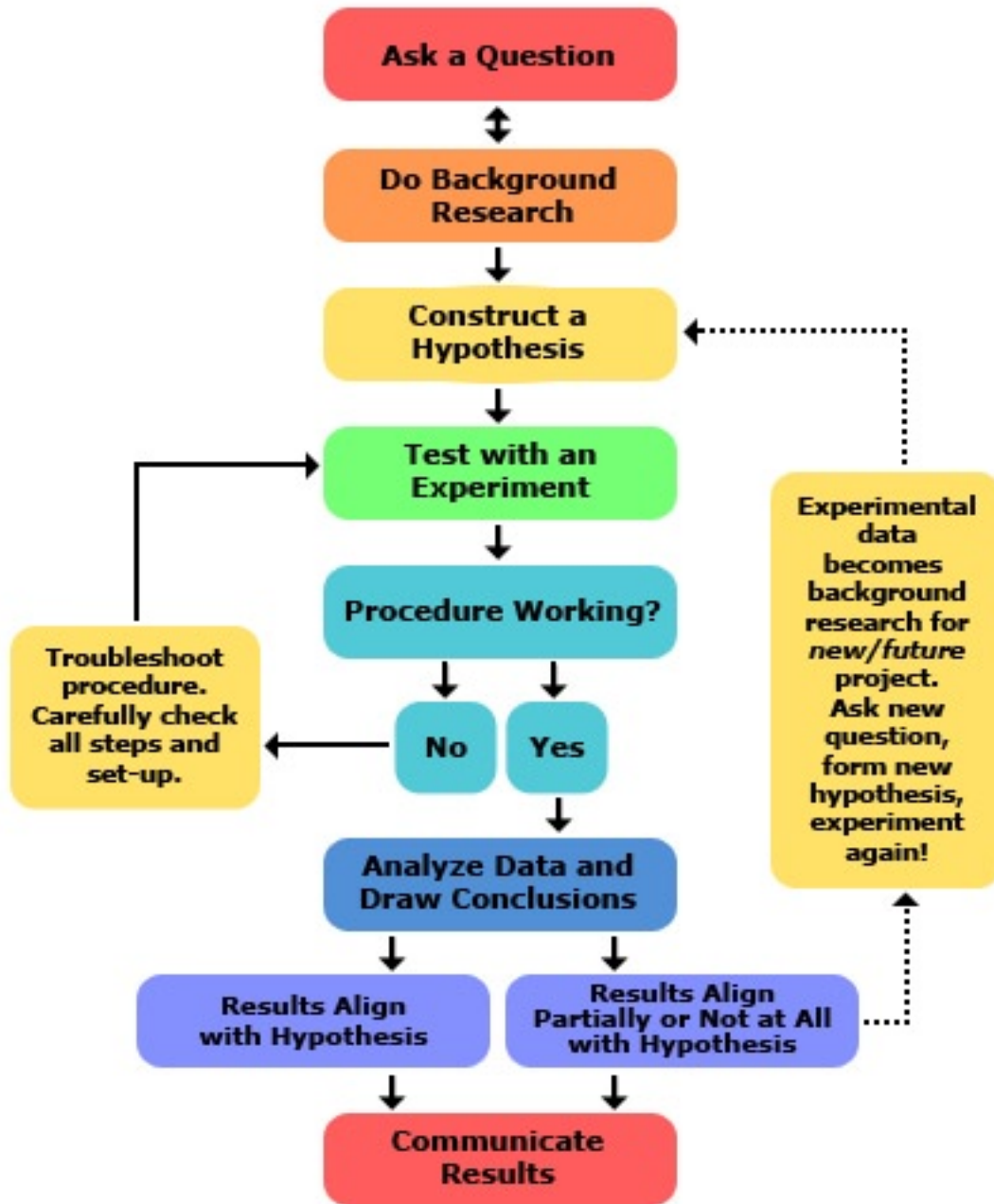




The Scientific Method

Even though this diagram shows the scientific method as a series of steps, keep in mind that new information or thinking might cause a scientist to back up and repeat steps at any point during the process. A process like the scientific method that involves such backing up and repeating is called an **iterative process**.



You may print and distribute up to 200 copies of this document annually, at no charge, for personal and classroom educational use. When printing this document, you may NOT modify it in any way. For any other use, please contact Science Buddies.

Copyright 2002-2014 Science Buddies. All rights reserved. Reproduction of material from this website without written permission is strictly prohibited. Use of this site constitutes acceptance of our Terms and Conditions of Fair Use.